

JUNIOR PARENT NIGHT

MATT WALTHER, SCHOOL COUNSELOR
ROB KAERCHER, COLLEGE AND CAREER COUNSELOR
BYRON-BERGEN JR. SR. HIGH SCHOOL

HIGH SCHOOL CREDITS

REGENTS:

22 CREDITS

4-ENGLISH/SOCIAL STUDIES

3-SCIENCE/MATH

2-PE

1 FINE ART

1/2-HEALTH

1-LANGUAGE

3.5-ELECTIVES

ADVANCED:

22 CREDITS

4-ENGLISH/SOCIAL STUDIES

3-SCIENCE/MATH

2-PE

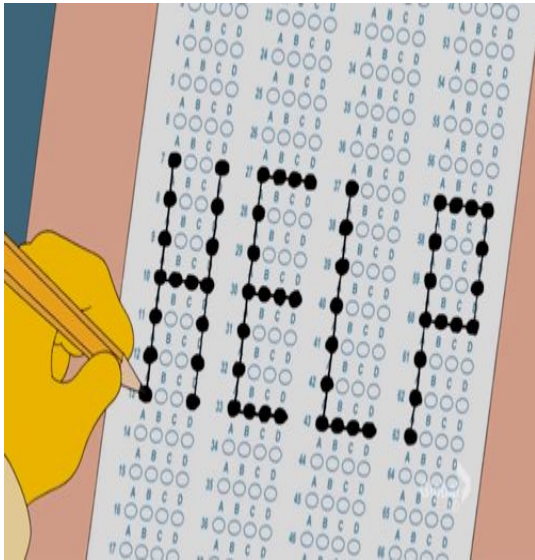
1-FINE ART

1/2-HEALTH

3-LANGUAGE

1.5-ELECTIVES

REGENTS EXAMS



REGENTS:

ENGLISH:

- ELA

SOCIAL STUDIES:

- GLOBAL HISTORY
- US HISTORY

MATH:

- 1 MATH EXAM

SCIENCE:

- 1 SCIENCE EXAM

ADVANCED:

ENGLISH:

- ELA

SOCIAL STUDIES:

- GLOBAL HISTORY
- US HISTORY

MATH:

- ALGEBRA
- GEOMETRY
- A2

SCIENCE:

- ANY 2 SCIENCE EXAMS

SENIOR YEAR SCHEDULING

THERE IS NO "NEXT YEAR"

Exploration (put yourself out there)

- Try content areas that you have never tried
- Job shadow
- Get involved
- Leave your options open

4 year College Focus

- Rigor
- Understand what HS classes will help you get into your specific program (college websites)
- Retake Exams

Career Track

- Start or continue in a program that will give you skills
- Start networking with adults
- Use the resources at school to help with Resume

Community College/Technical Schools

- Make sure all credits and test are accounted for
- Apply Early (Tech Schools/Special Programs)
- Understand what prerequisites there are for the program.

Full Day BB (College, Career Exploration)

Complete classes for graduation

Rigor (AP, ACE, PLTW)

GV Education Partnership (Tech Schools, Career Track)

Skills/Certifications for College or Career

½ Day BB – ½ Day GVEP

Real World Experience

Academies (College, Exploration, Career)

Ag. Business/ Health/ Legal/ I.T.

Career or Program Specific (must apply)

GCC Credits

Real World Experiences

College Today

Take classes needed to graduate at BB

Take college Classes at a neighboring college



WHAT DO I WANT TO BE WHEN I GROW UP? HOW DO I GET A
WHAT DO I MAJOR IN? DO I HAVE TO TAKE THE SAT? LETTER
ARE MY GRADES GOOD ENOUGH? OF RECOMMENDATION?
HOW DO I GET SCHOLARSHIPS? CAN MY ESSAY GO OVER
WHAT DOES EARLY DECISION MEAN? 650 WORDS?
SHOULD I JOIN THE MILITARY? WHAT CLASSES SHOULD I TAKE?
HOW MUCH MONEY IS THIS GOING TO COST? FAFSA? GESUNDHEIT!

WHAT DO YOU DO WITH THIS VITAL INFORMATION: SEARCH

- PART 1
- [College Board Big Future](#) (All Colleges and Universities)
 - [Naviance Family Connection](#) (All Colleges and Universities)
 - [SUNY](#) (Only Public State Schools, 2-year and 4-year)
 - [NCAA](#) (Sports Broken Down by Athletic Division)

- PART 2
- [Visit the college website](#)

- PART 3
- [Visit the college](#)



Rochester Riverside Convention Center
Empire Hall
123 E Main St
Rochester, NY 14604

Sunday, March 18, 2018

1 p.m. to 3:30 p.m.

Monday, March 19, 2018

9 a.m. to 12 p.m.

REMEMBER WHO YOU
MEET AT COLLEGE
VISITS!

MEET WITH THE
ADMISSIONS REPS WHO
BYRON-BERGEN!

**When a group of high
school students tour a
college campus**



STANDARDIZED TESTS

TEST OPTIONAL
POLICY

❑ SAT

- ❑ Tests Critical Reading, Writing, Math, Essay(Optional)
- ❑ Official scores must be submitted through College Board
- ❑ Do you need any subject tests?

❑ ACT

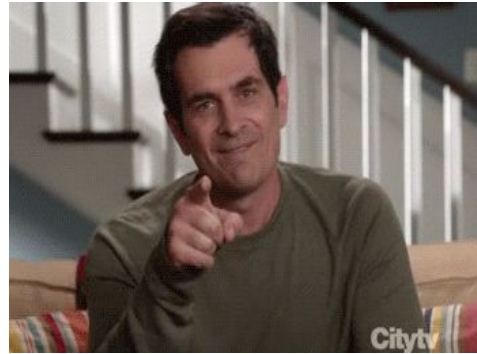
- ❑ Tests English, Math, Reading, Science, Writing (Optional)
- ❑ Official scores must be submitted through ACT

COLLEGE APPLICATIONS

THE COMMON
APPLICATION

- ❑ Electronic Application
 - ❑ Use Common Application when submitting to SUNY and Private schools
 - ❑ Use electronic submission alternatives for two-year colleges and colleges that are not a member of Common Application
- ❑ Recommendation Letters
 - ❑ Requirement for most four year colleges and universities
 - ❑ Preferred method is electronic submission
 - ❑ Some teachers may prefer submitting by mail
- ❑ Essay/Personal Statement/Supplements
 - ❑ Requirement for all students through English
 - ❑ Different supplement questions for each school
- ❑ Application Fees
 - ❑ SUNY Application fee is \$50 for each college
 - ❑ Fees can vary between \$40 - \$125
 - ❑ Some are free depending on school and circumstances

HOW CAN I STAND OUT?



WHAT DO THEY ASK ON A COLLEGE APPLICATION?

EARLY DECISION

EARLY ACTION

REGULAR DECISION

ROLLING ADMISSIONS

FINANCIAL AID

is any grant or scholarship, loan, or paid employment offered to help a student meet his/her college expenses. Such **aid** is usually provided by various sources such as federal and state agencies, colleges, high schools, foundations, and corporations.



THE FINE PRINT!

Every student is different. Unique circumstances must be discussed. Leave no elephant in the room. Examples include: Financial concern, NCAA eligibility, requesting fee waivers, early deadlines, interviews, auditions, art portfolios, additional requirements, subject tests, CSS profile, career uncertainty, etc...

IF I DON'T KNOW, I CAN'T HELP



RKAERCHER@BBSCHOOLS.ORG
MWALTHER@BBSCHOOLS.ORG



@BEECOLLEGEBOUND

